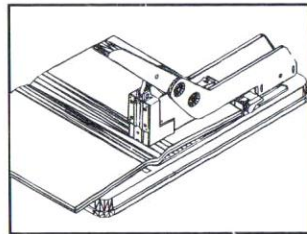
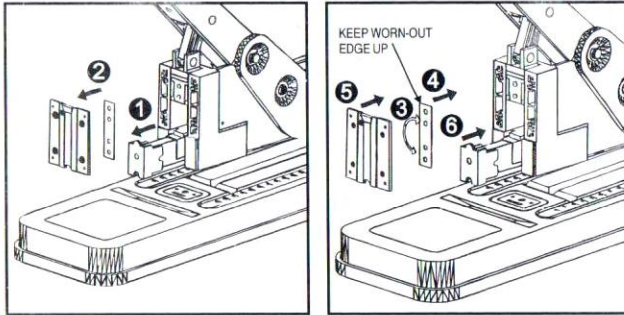
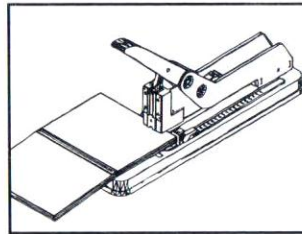


## HOW TO CHANGE BLADE EDGE IF REQUIRED

1. Keep magazine assembly outside by pressing button.
2. Open the front cover with the help of screw driver.
3. Turn the worn out edge of blade punch upside.
4. Place the blade punch on punch holding plate.
5. Close the front cover.
6. Push magazine assembly to its normal position.



Long Distance Stapling



Short Distance Stapling

Using deep throat feature, sheets upto 500 mm length can be stapled at centre by adjusting paper stoppers at appropriate position.

## CAUTIONS :

1. Use proper staple pins for required stapling.
2. Do not use without papers.

## SPECIFICATIONS :

- |                           |   |
|---------------------------|---|
| • Staples                 | 7 sizes as mentioned                                    |
| • Staple loading capacity | 100 staples   |
| • Stapling capacity       | Upto 200 printing paper sheets of 50 gms/m <sup>2</sup> |
| • Throat depth            | 250 MM  |
| • Size                    | L 499 mm X W 124 mm X H 290 mm                          |
| • Net Weight              | 3.1 Kg. (Approx.)                                       |

Spares available at nominal price.

# DESK TOP HEAVY DUTY STAPLER

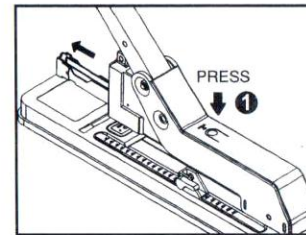
MAXIMUM WORK WITH MINIMUM EFFORT

## FL-12L20

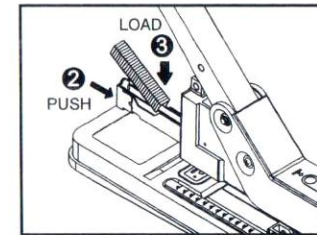
WITH FRONT LOADING SYSTEM

## INSTRUCTION MANUAL

STAPLES USED	LEG LENGTH	STAPLING CAPACITY (50 gms/m <sup>2</sup> PRINTING PAPER SHEETS)
23/6	6 mm	2 - 30
23/8	8 mm	20 - 50
23/10	10 mm	40 - 70
23/13	13 mm	50 - 120
23/15	15 mm	90 - 140
23/17	17 mm	120 - 160
23/20	20 mm	140 - 200



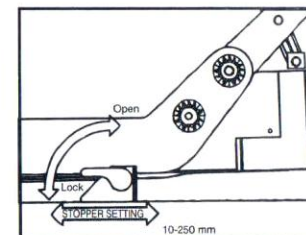
▲ CONVENIENT "PRESS BUTTON" FOR FRONT LOADING



▲ QUICK & EASY FRONT LOADING

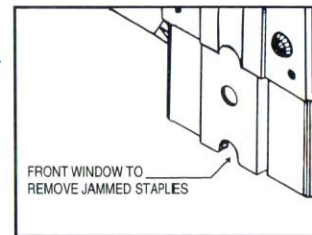
### LOADING INSTRUCTIONS :

1. Press button provided on top of the magazine housing.
2. Load a full strip of suitable staple pins.
3. Push magazine back to locked position.



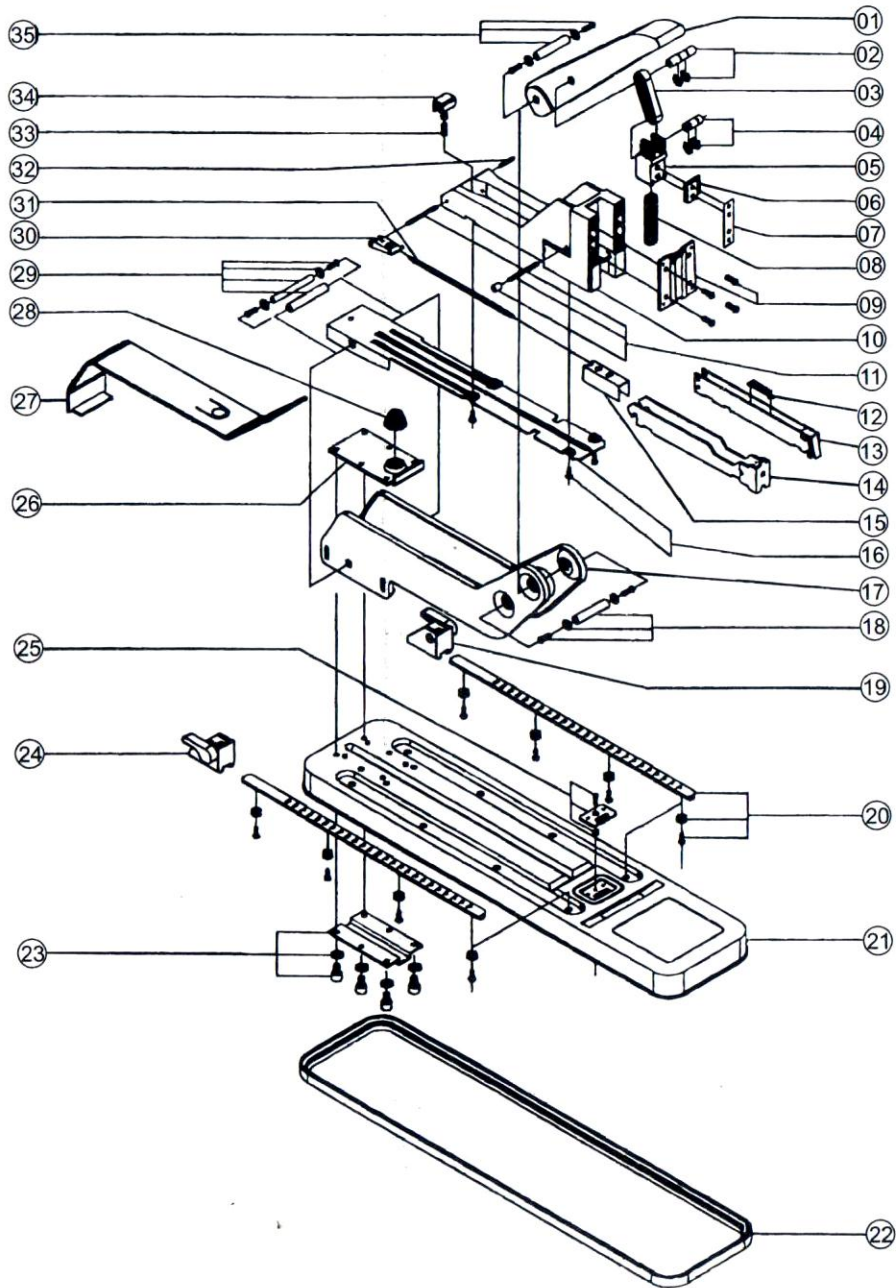
▲ ADJUSTABLE PAPER STOPPERS FOR PRECISE PAPER POSITIONING

FRONT WINDOW TO CLEAR JAM



FRONT WINDOW TO REMOVE JAMMED STAPLES

• ASSEMBLY DETAILS FOR FL-12 L 20 STAPLER



• PART LIST FOR FL-12 L 20 STAPLER

S. NO.	DESCRIPTION OF PARTS	ORDER CODE
01	HANDLE UNIT	KP - 12 L 20-01
02	UPPER PIN UNIT FOR LINK	KP - 12 L 20-02
03	LINK	KP - 12 L 20-03
04	LOWER PIN UNIT FOR LINK	KP - 12 L 20-04
05	SLIDER	KP - 12 L 20-05
06	PUNCH HOLDER	KP - 12 L 20-06
07	PUNCH	KP - 12 L 20-07
08	COMPRESSION SPRING	KP - 12 L 20-08
09	FRONT COVER UNIT	KP - 12 L 20-09
10	MAIN BODY	KP - 12 L 20-10
11	PIN UNIT FOR BODY	KP - 12 L 20-11
12	TENSION SPRING	KP - 12 L 20-12
13	STAPLE GUIDE UNIT	KP - 12 L 20-13
14	MAGAZINE	KP - 12 L 20-14
15	PUSHER	KP - 12 L 20-15
16	THROAT ARM UNIT	KP - 12 L 20-16
17	SIDE BRACKET UNIT	KP - 12 L 20-17
18	SPACER PIN UNIT FOR BRACKET	KP - 12 L 20-18
19	PAPER STOPPER UNIT RIGHT SIDE	KP - 12 L 20-19
20	GUIDE RAIL UNIT	KP - 12 L 20-20
21	STEEL BASE	KP - 12 L 20-21
22	PLASTIC BASE	KP - 12 L 20-22
23	LOWER SUPPORT UNIT	KP - 12 L 20-23
24	PAPER STOPPER UNIT LEFT SIDE	KP - 12 L 20-24
25	CLINCHER UNIT	KP - 12 L 20-25
26	UPPER SUPPORT	KP - 12 L 20-26
27	PLASTIC COVER	KP - 12 L 20-27
28	CONICAL SPRING	KP - 12 L 20-28
29	MAIN HINGE PIN UNIT	KP - 12 L 20-29
30	LOCK	KP - 12 L 20-30
31	TENSION SPRING FOR PUSHER	KP - 12 L 20-31
32	BODY PIN SMALL	KP - 12 L 20-32
33	COMPRESSION SPRING FOR BUTTON	KP - 12 L 20-33
34	BUTTON	KP - 12 L 20-34
35	HANDLE HINGE PIN UNIT	KP - 12 L 20-35

★ ALL SPARES AVAILABLE ON REQUEST AT REASONABLE PRICE