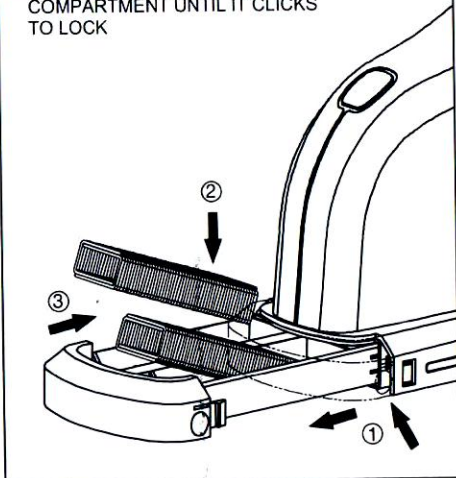


HOW TO LOAD STAPLE IN COMPARTMENT

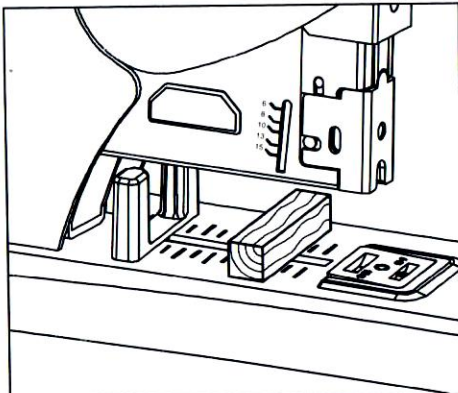
1. PRESS STAPLE STORAGE 'COMPARTMENT LOCK' & PULL BACK SIDE
2. VARIABLE CAPACITY OF STAPLE STORAGE POSSIBILITY
3. PUSH STAPLE STORAGE COMPARTMENT UNTIL IT CLICKS TO LOCK



SALIENT FEATURES

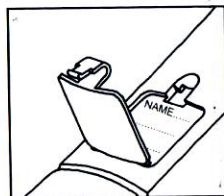
- NEW ELEGANT DESIGN
- JAM FREE MECHANISM
- EASY FRONT LOADING
- ADJUSTABLE PAPER STOPPER
- LONG HANDLE FOR EFFORTLESS WORKING
- STAPLE STORAGE COMPARTMENT
- NAME IDENTIFICATION
- ANTI-SKID PAD
- SOFT GRIP

JAM CLEARING MECHANISM

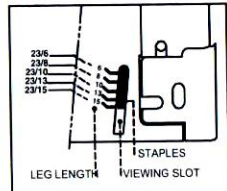


1. PLACE A PIECE OF WOOD APPROX. 15 mm HEIGHT, 10 mm BEHIND THE CLINCHER AND PRESS THE HANDLE. THE JAMMED STAPLES WILL BE CLEARED.

IDENTIFICATION



STAPLE VIEWING SLOT



SPECIFICATIONS :

DESCRIPTION	FL-12M15	FL-12M13
STAPLE	5 SIZE	4 SIZE
LOADING CAPACITY	100	100
STAPLING CAPACITY	UPTO 140 SHEETS	UPTO 120 SHEETS
THROAT DEPTH	70 mm	70 mm
SIZE (L X W X H)	337 X 75 X 204	337 X 75 X 204
NET WEIGHT (APPROX.)	1.625 kg	1.60 kg



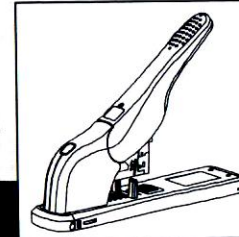
* SPARES AVAILABLE

FRONT LOADING HEAVY DUTY STAPLER MAXIMUM WORK WITH MINIMUM EFFORT

FL-12M15 / 13

WITH STAPLE STORAGE COMPARTMENT

INSTRUCTION MANUAL

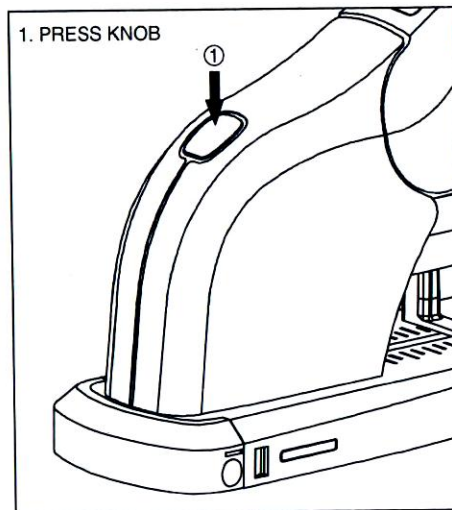


STAPLE SELECTION CHART

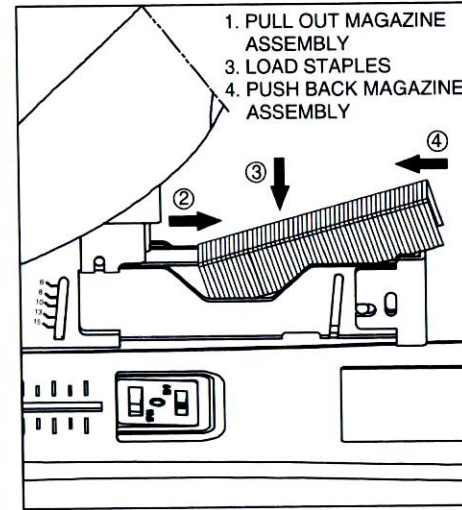
		STAPLE SIZE	SHEET THICKNESS	NO. OF SHEETS (55 kgs PPC PAPER)
For FL-12M15 For FL-12M13		23/6	3 mm	2 ~ 30
		23/8	5 mm	20 ~ 50
		23/10	7 mm	40 ~ 70
		23/13	9 mm	50 ~ 120
		23/15	11 mm	90 ~ 140

HOW TO LOAD STAPLES :

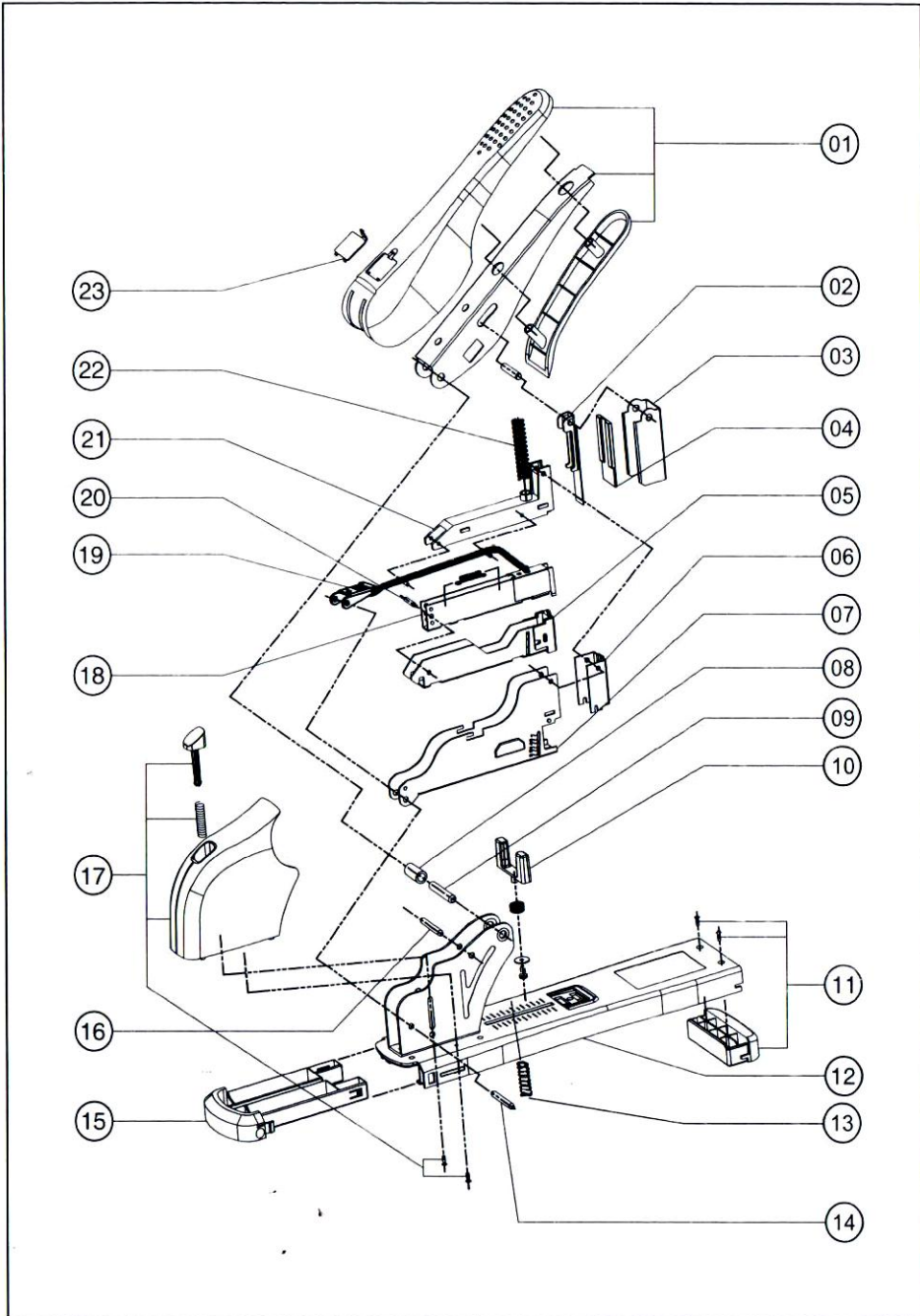
1. PRESS KNOB



1. PULL OUT MAGAZINE ASSEMBLY
3. LOAD STAPLES
4. PUSH BACK MAGAZINE ASSEMBLY



• SPARE PARTS DETAIL FOR STAPLER FL-12M15 / 13



• SPARE PARTS DETAIL FOR STAPLER FL-12M15 / 13

S.NO.	DESCRIPTION OF PARTS	NO. OFF	ORDER CODE
01	HANDLE ASSEMBLY	01	KP-12M15 M-01
02	SPRING PUNCH ASSEMBLY	01	KP-12M15 M-02
03	HANDLE GUIDE	01	KP-12M15 M-03
04	GUIDE PAD	01	KP-12M15 M-04
05	MAGAZINE ASSEMBLY	01	KP-12M15 M-05
06	FRONT COVER	01	KP-12M15 M-06
07	MAGAZINE COVER (FL-12M15 / FL-12M13)	01	KP-12M15 M-07 KP-12M13 M-07
08	SLEEVE	01	KP-12M15 M-08
09	PIN FOR HANDLE	01	KP-12M15 M-09
10	STOPPER ASSEMBLY	01	KP-12M15 M-10
11	PLASTIC BASE ASSEMBLY	01	KP-12M15 M-11
12	STEEL BASE ASSEMBLY	01	KP-12M15 M-12
13	COMPRESSION SPRING	01	KP-12M15 M-13
14	MAIN HINGE PIN	01	KP-12M15 M-14
15	STAPLE CONTAINER	01	KP-12M15 M-15
16	STOPPER PIN	01	KP-12M15 M-16
17	PLASTIC COVER ASSEMBLY	01	KP-12M15 M-17
18	STAPLE GUIDE	01	KP-12M15 M-18
19	PUSHER ASSEMBLY	01	KP-12M15 M-19
20	STOPPER PIN BACK SIDE	01	KP-12M15 M-20
21	STAPLE COVER	01	KP-12M15 M-21
22	COMPRESSION SPRING MAIN	01	KP-12M15 M-22
23	NAME PLATE	01	KP-12M15 M-23

★ ALL SPARES AVAILABLE ON REQUEST AT REASONABLE PRICE