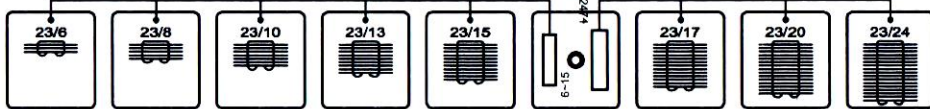
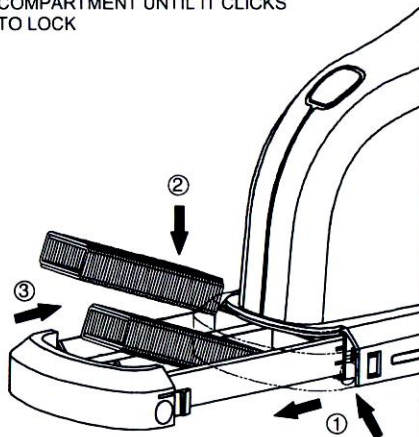


## HOW TO SELECT CLINCHER POSITION

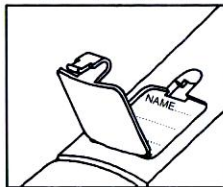


## HOW TO LOAD STAPLE IN COMPARTMENT

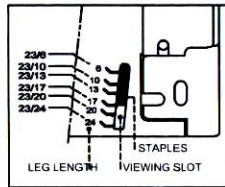
1. PRESS STAPLE STORAGE 'COMPARTMENT LOCK' & PULL BACK SIDE
2. VARIABLE CAPACITY OF STAPLE STORAGE POSSIBILITY
3. PUSH STAPLE STORAGE COMPARTMENT UNTIL IT CLICKS TO LOCK



## IDENTIFICATION



## STAPLE VIEWING SLOT



## SPECIFICATIONS :

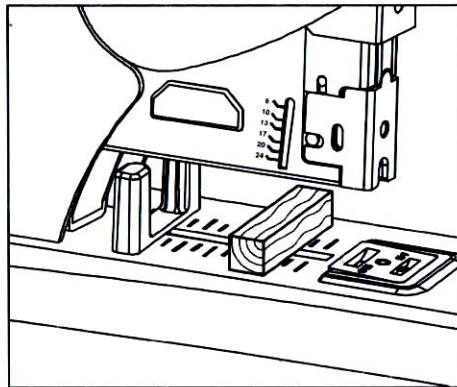
DESCRIPTION	FL-12M24	FL-12M20	FL-12M17
STAPLE	8 SIZE	7 SIZE	6 SIZE
LOADING CAPACITY	100	100	100
STAPLING CAPACITY	UPTO 240 SHEETS	UPTO 200 SHEETS	UPTO 160 SHEETS
THROAT DEPTH	70 mm	70 mm	70 mm
SIZE (L X W X H)	372 X 82 X 260	372 X 82 X 260	372 X 82 X 254
NET WEIGHT (APPROX.)	2.25 kg	2.25 kg	2.22 kg

\* SPARES AVAILABLE

## SALIENT FEATURES

- NEW ELEGANT DESIGN
- JAM FREE MECHANISM
- EASY FRONT LOADING
- ADJUSTABLE PAPER STOPPER
- LONG HANDLE FOR EFFORTLESS WORKING
- STAPLE STORAGE COMPARTMENT
- NAME IDENTIFICATION
- ANTI-SKID PAD
- SOFT GRIP

## JAM CLEARING MECHANISM



1. PLACE A PIECE OF WOOD APPROX. 15 mm HEIGHT, 10 mm BEHIND THE CLINCHER AND PRESS THE HANDLE. THE JAMMED STAPLES WILL BE CLEARED.



# FRONT LOADING HEAVY DUTY STAPLER MAXIMUM WORK WITH MINIMUM EFFORT

## FL-12M24 / 20 / 17 WITH STAPLE STORAGE COMPARTMENT

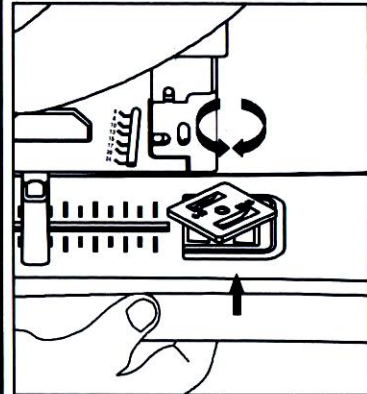
## INSTRUCTION MANUAL



## STAPLE SELECTION CHART

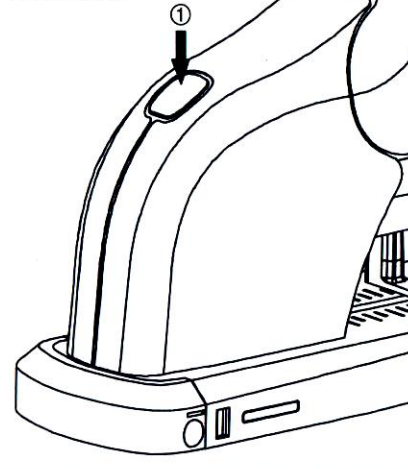
	STAPLE SIZE	SHEET THICKNESS	NO. OF SHEETS (55 kgs PPC PAPER)
For FL-12M24	23/6	3 mm	2 ~ 30
	23/8	5 mm	20 ~ 50
For FL-12M20	23/10	7 mm	40 ~ 70
	23/13	9 mm	50 ~ 120
For FL-12M17	23/15	11 mm	90 ~ 140
	23/17	13 mm	120 ~ 160
	23/20	16 mm	140 ~ 200
	23/24	20 mm	200 ~ 240

## TURN CLINCHER AS SHOWN

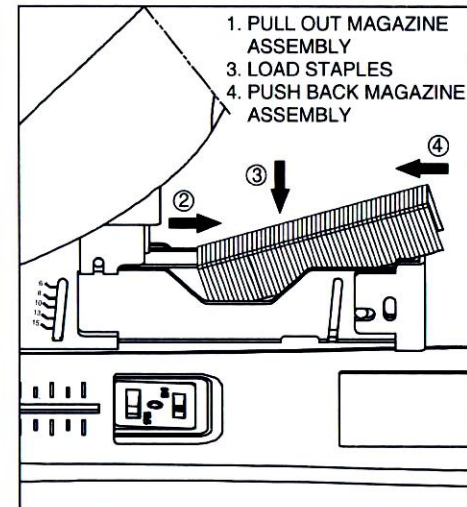


## HOW TO LOAD STAPLES :

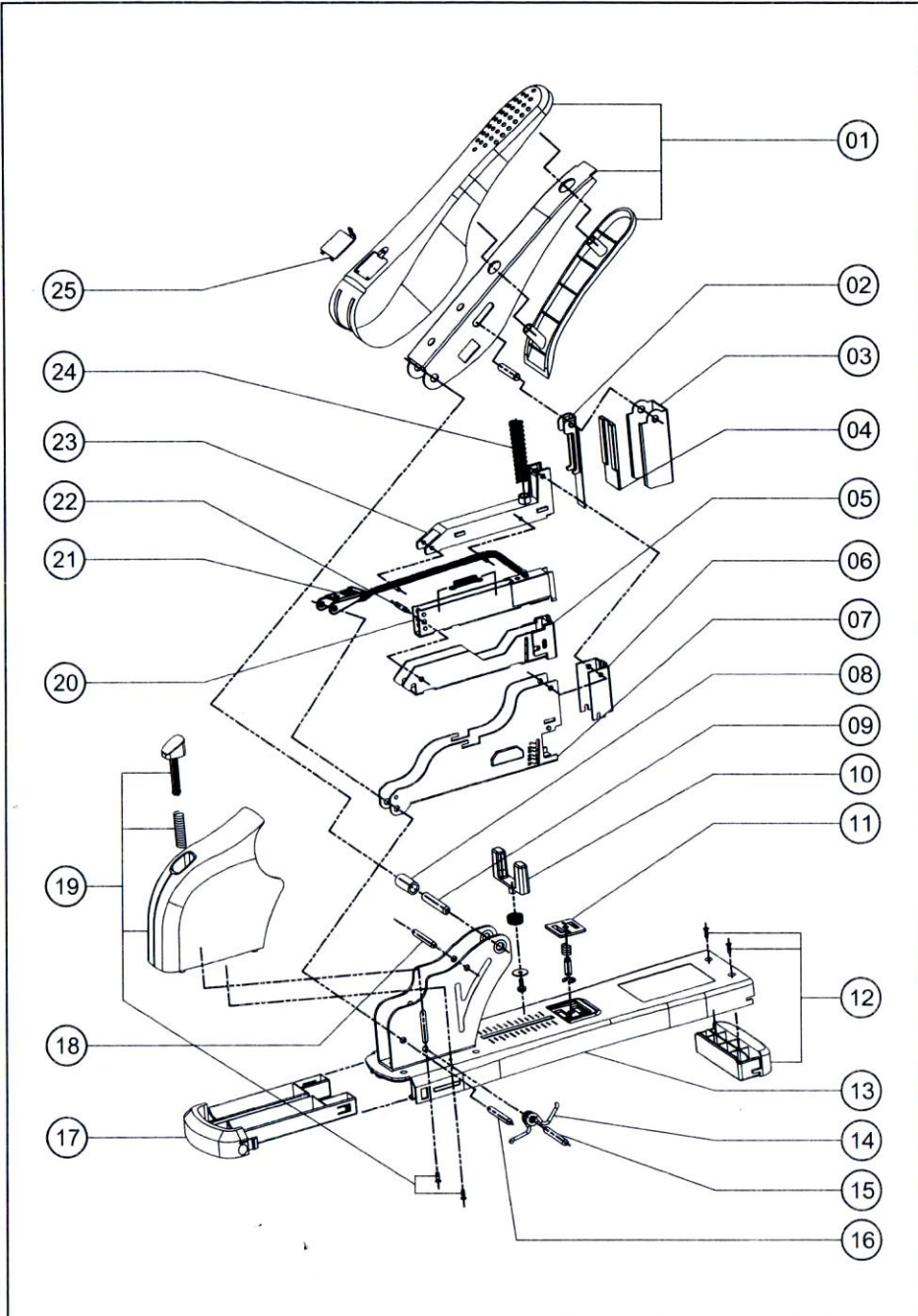
1. PRESS KNOB



1. PULL OUT MAGAZINE ASSEMBLY
3. LOAD STAPLES
4. PUSH BACK MAGAZINE ASSEMBLY



• ASSEMBLY DETAILS FOR FL-12M 24 / 20 / 17 STAPLER



• PART LIST FOR FL-12M 24 / 20 / 17 STAPLER

S.NO.	DESCRIPTION OF PARTS	NO. OFF	ORDER CODE
01	HANDLE ASSEMBLY	01	KP-12M24 M-01
02	SPRING PUNCH ASSEMBLY	01	KP-12M24 M-02
03	HANDLE GUIDE	01	KP-12M24 M-03
04	GUIDE PAD	01	KP-12M24 M-04
05	MAGAZINE ASSEMBLY	01	KP-12M24 M-05
06	FRONT COVER	01	KP-12M24 M-06
07	MAGAZINE COVER (FL-12M24 / FL-12M20 / FL-12M17)	01	KP-12M24 M-07
			KP-12M20 M-07
			KP-12M17 M-07
08	SLEEVE	01	KP-12M24 M-08
09	PIN FOR HANDLE	01	KP-12M24 M-09
10	STOPPER ASSEMBLY	01	KP-12M24 M-10
11	FORM PIECE ASSEMBLY	01	KP-12M24 M-11
12	PLASTIC BASE ASSEMBLY	01	KP-12M24 M-12
13	STEEL BASE ASSEMBLY (FL-12M24 / FL-12M17)	01	KP-12M24 M-13
			KP-12M17 M-13
14	TORSION SPRING	01	KP-12M24 M-14
15	PIN FOR TORSION SPRING	01	KP-12M24 M-15
16	MAIN HINGE PIN	01	KP-12M24 M-16
17	STAPLE CONTAINER	01	KP-12M24 M-17
18	STOPPER PIN	01	KP-12M24 M-18
19	PLASTIC COVER ASSEMBLY (FL-12M24 / FL-12M17)	01	KP-12M24 M-19
			KP-12M17 M-19
20	STAPLE GUIDE	01	KP-12M24 M-20
21	PUSHER ASSEMBLY	01	KP-12M24 M-21
22	STOPPER PIN BACK SIDE	01	KP-12M24 M-22
23	STAPLE COVER	01	KP-12M24 M-23
24	COMPRESSION SPRING MAIN	01	KP-12M24 M-24
25	NAME PLATE	01	KP-12M24 M-25

★ ALL SPARES AVAILABLE ON REQUEST AT REASONABLE PRICE