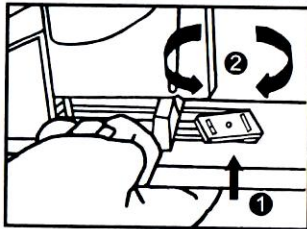
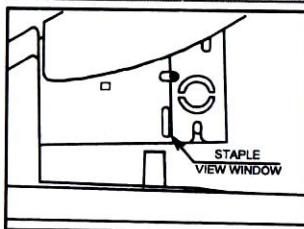
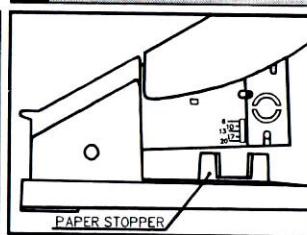


**HOW TO TURN CLINCHER**

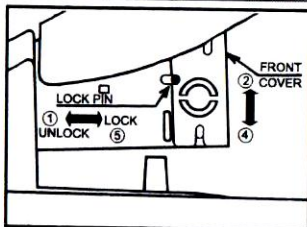
1. Lift the clincher using your index finger.
2. Turn the clincher to desired position.

**STAPLE VIEW WINDOW**

1. Use the staple view window to check staple size according to your required stapling.

**HOW TO CLEAR JAM**

1. Turn the paper stopper at 90° as shown.
2. Make a blank stroke to eject jammed staples.

**HOW TO CLEAR HEAVY JAM**

1. Slide lock pin to unlock front cover.
2. Slide front cover upward.
3. Remove the jammed staples.
4. Slide the front cover down to normal position.
5. Slide lock pin back to lock position.

**CAUTIONS :**

1. Use proper staple pins for required stapling.
2. Avoid use without papers.

**SPECIFICATIONS :**

- Staples 6 sizes as mentioned
- Staple loading capacity 100 staples
- Stapling capacity Upto 160 (50 gms/m<sup>2</sup> Printing paper sheets)
- Throat depth 85 MM
- Size L 371 X W 80 X H 245
- Net Weight 1.9 Kg. (Approx.)

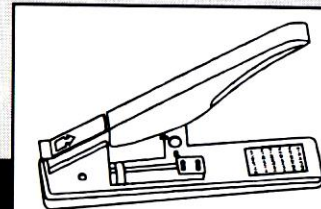
Spares available at nominal price.

**DESK TOP HEAVY DUTY STAPLER**

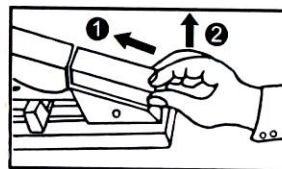
MAXIMUM WORK WITH MINIMUM EFFORT

**HD-12S/17**

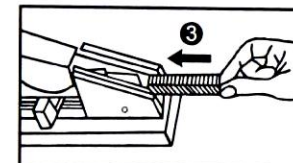
WITH PLASTIC COVERED STEEL HANDLE

**INSTRUCTION MANUAL**

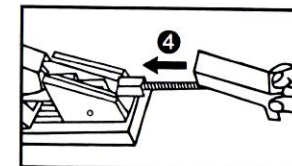
STAPLES USED	LEG LENGTH	STAPLING CAPACITY (50 gms/m <sup>2</sup> PRINTING PAPER SHEETS)
23/6	6 mm	2 - 30
23/8	8 mm	20 - 50
23/10	10 mm	40 - 70
23/13	13 mm	50 - 120
23/15	15 mm	90 - 140
23/17	17 mm	120 - 160

**HOW TO LOAD STAPLES :**

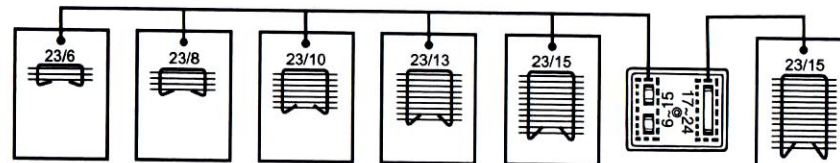
- LIFT THE PLASTIC CAP AFTER PUSHING FORWARD



- LOAD THE REQUIRED STAPLES

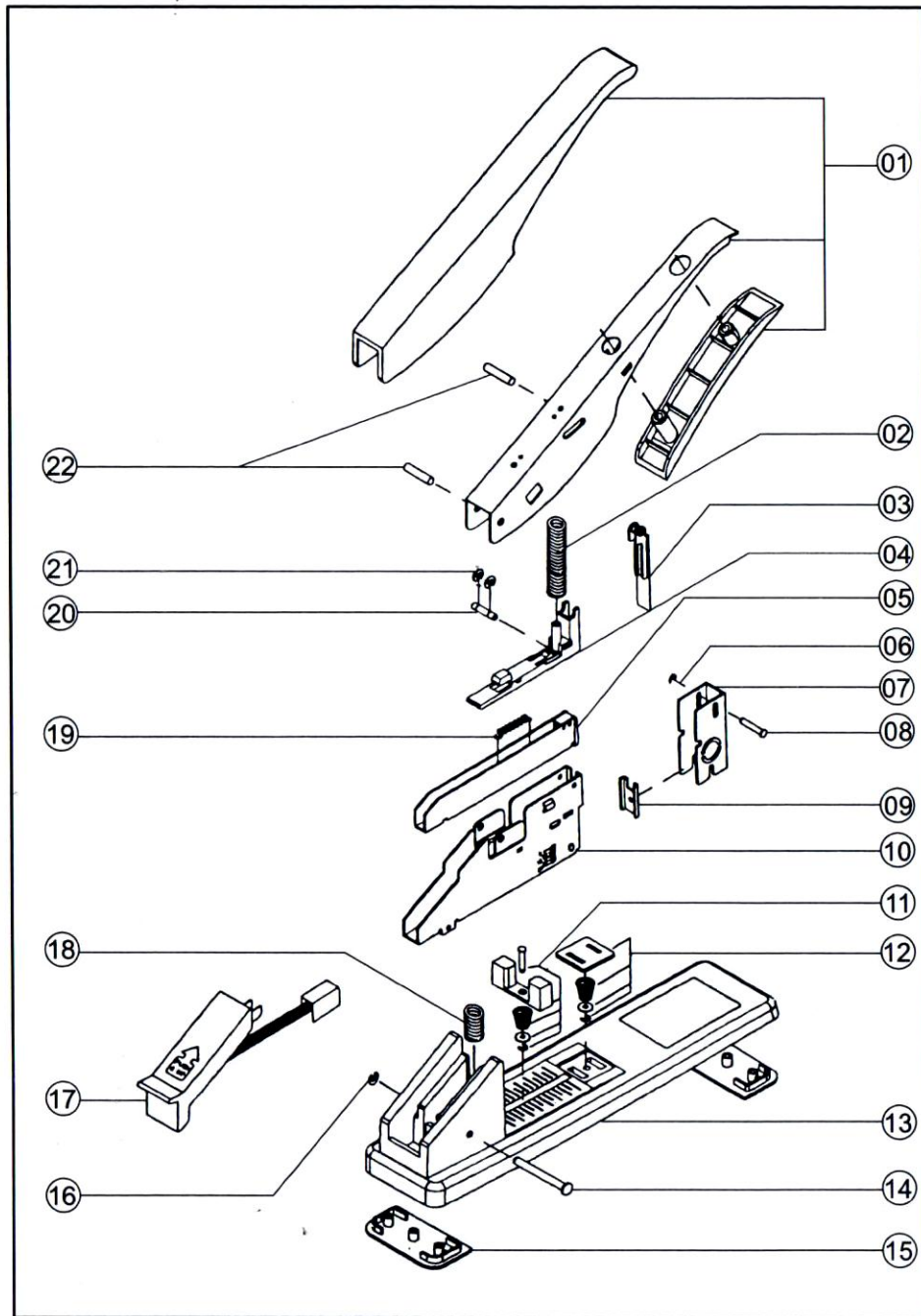


- REPLACE THE PLASTIC CAP

**HOW TO SELECT CLINCHER POSITION :**



• ASSEMBLY DETAILS FOR HD-12S/17 STAPLER



• PART LIST FOR HD-12S/17 STAPLER

S. NO.	DESCRIPTION OF PARTS	ORDER CODE
01	HANDLE ASSEMBLY	KP-12S/17-01
02	COMPRESSION SPRING	KP-12S/17-02
03	PUNCH ASSEMBLY	KP-12S/17-03
04	STAPLE COVER	KP-12S/17-04
05	STAPLE GUIDE ASSEMBLY	KP-12S/17-05
06	CIRCLIP	KP-12S/17-06
07	FROUNT MAGAZINE COVER	KP-12S/17-07
08	STEP PIN	KP-12S/17-08
09	INNER GUIDE	KP-12S/17-09
10	MAGZINE	KP-12S/17-10
11	PAPER STOPPER ASSEMBLY	KP-12S/17-11
12	CLINCHER ASSEMBLY	KP-12S/17-12
13	BASE	KP-12S/17-13
14	MAIN HINGE PIN	KP-12S/17-14
15	ANTI-SKIT FEET	KP-12S/17-15
16	CIRCLIP	KP-12S/17-16
17	PUSHER ASSEMBLY	KP-12S/17-17
18	COMPRESSION SPRING	KP-12S/17-18
19	TENSION SPRING	KP-12S/17-19
20	LOCK PIN	KP-12S/17-20
21	CIRCLIP	KP-12S/17-21
22	HANDLE HINGE PIN	KP-12S/17-22

★ ALL SPARES AVAILABLE ON REQUEST AT REASONABLE PRICE