

HEAVY DUTY PUNCHING MACHINE

MODEL { **1016 - 1 HOLE**
1032 - 1 HOLE

INSTRUCTION MANUAL

For the safe and prolonged life of the product please follow the following instructions.

1. - Do not apply jerks while punching.

2. - Do not try to punch laminated paper, board or vinyl (use only office papers up to 80 gsm).

3. - After heavy use, remove hollow punches by loosening cross head screw (fig. - 1) and pulling out from holder with the help of punch fitting prob(fig. - 2).

- Check punches are free from paper etc. before re-fitting.

4. - Remove staples or pins from paper before punching.

- If all sheets in paper stack are not being punched, one or more punches are blocked and need to remove. Clear punches with a small screwdriver or replace the punch(es).

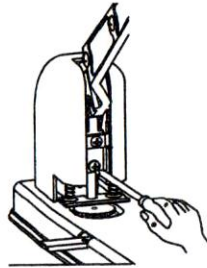


Fig. - 1

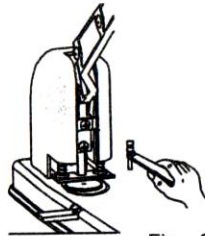


Fig. - 2

5. - Plastic disc need to be rotate regularly, before the grooves become deep and uneven. Replace after each full 360° rotation.

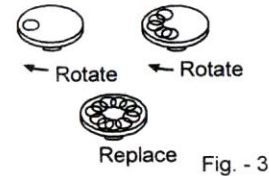


Fig. - 3

6. - To replace plastic disc, Place the disc in to the hole(as shown in fig. - 4) and slide forward.

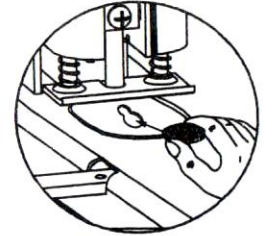


Fig. - 4

7. - Please do not put your finger(s) near working area, to avoid injury(fig. - 5).

8. - Depress the handle at middle of end position. (fig. - 6).

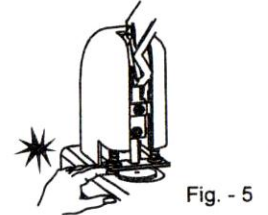
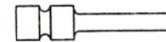


Fig. - 5

9. - Punching hole size - $\varnothing 6$.

- Spare punches available from your stationery supplier at nominal price.



Punch



Plastic disc

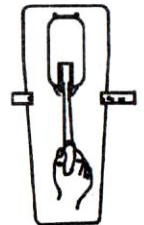


Fig. - 6

Order code:

Punches

KP-1016-08 for 1016

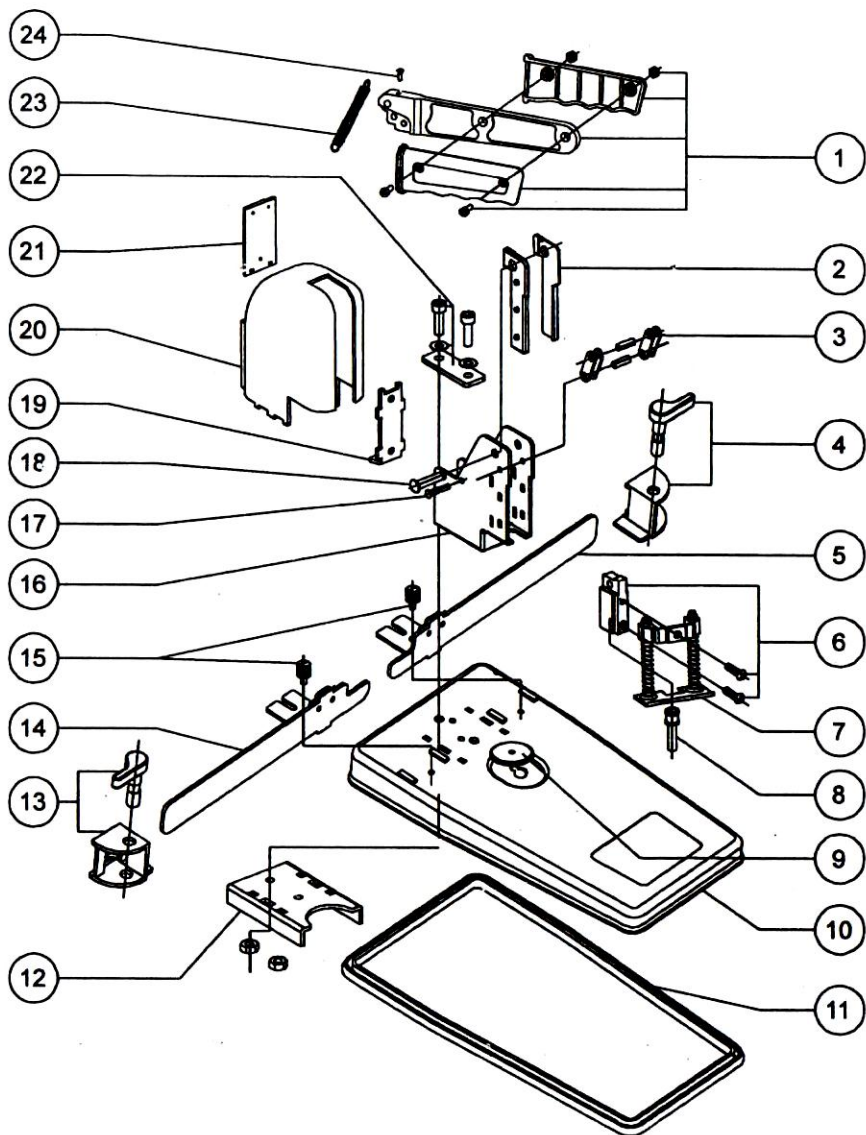
KP-1032-08 for 1032

Plastic disc

KP-1016-09 for 1016 & 1032

KINDLY USE ON STANDARD PAPER ONLY (UP TO 80 GSM.)

● SPARE PARTS DETAIL FOR PUNCHING MACHINE 1016 / 1032



● SPARE PARTS LIST FOR PUNCHING MACHINE 1016 / 1032

S.NO.	DESCRIPTION OF PARTS	NO. OFF	ORDER CODE
01	HANDLE ASSEMBLY	01	KP-1016-01
02	PLASTIC GUIDE ASSEMBLY	01	KP-1016-02
			KP-1032-02
03	LINK ASSEMBLY	01	KP-1016-03
			KP-1032-03
04	PAPER GUIDE & STOPPER LOCK ASSYEMBLY (R.H.S.)	01	KP-1016-04
05	PAPER STOPPER (R.H.S.)	01	KP-1016-05
06	PUNCH HOLDER ASSEMBLY	01	KP-1016-06
			KP-1032-06
07	STRIPPER ASSEMBLY	01	KP-1016-07
			KP-1032-07
08	PUNCH	01	KP-1016-08
			KP-1032-08
09	PLASTIC DISC	01	KP-1016-09
10	STEEL BASE	01	KP-1016-10
11	PLASTIC BASE	01	KP-1016-11
12	STIFFENING	01	KP-1016-12
13	PAPER GUIDE & STOPPER LOCK ASSYEMBLY (L.H.S.)	01	KP-1016-13
14	PAPER STOPPER (L.H.S.)	01	KP-1016-14
15	GAUGE SCREW	02	KP-1016-15
16	STEEL BRACKET	01	KP-1016-16
			KP-1032-16
17	PIN (HANDLE SPRING)	01	KP-1016-17
18	HINGE PIN (MAIN)	01	KP-1016-18
19	BACK SUPPORT	01	KP-1016-19
			KP-1032-19
20	PLASTIC COVER	01	KP-1016-20
			KP-1032-20
21	SCRAP COVER	01	KP-1016-21
22	STIFFENING ASSEMBLY	01	KP-1016-22
23	TENSION SPRING (HANDLE)	01	KP-1016-23
24	SCREW	01	KP-1016-24

★ ALL SPARES AVAILABLE ON REQUEST AT REASONABLE PRICE