

# HEAVY DUTY PUNCHING MACHINE

**MODEL** { **2016 - 2 HOLE**  
**2032 - 2 HOLE**

## INSTRUCTION MANUAL

For the safe and prolonged life of the product please follow the following instructions.

1. - Do not apply jerks while punching.

2. - Do not try to punch laminated paper, board or vinyl (use only office papers up to 80 gsm).

3. - After heavy use, remove hollow punches by loosening cross head screw (fig. - 1) and pulling out from holder with the help of punch fitting prob(fig.- 2).

- Check punches are free from paper etc. before re-fitting.

4. - Remove staples or pins from paper before punching.

- If all sheets in paper stack are not being punched, one or more punches are blocked and need to remove. Clear punches with a small screwdriver or replace the punch(es).

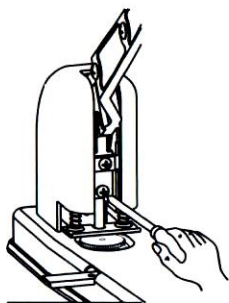


Fig. - 1

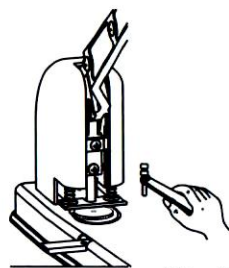


Fig. - 2

5. - Plastic disc need to be rotate regularly, before the grooves become deep and uneven. Replace after each full 360° rotation.

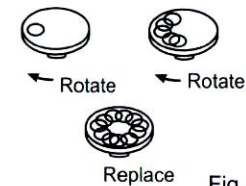


Fig. - 3

6. - To replace plastic disc, place the disc in to the hole(as shown in fig. - 4) and slide forward.

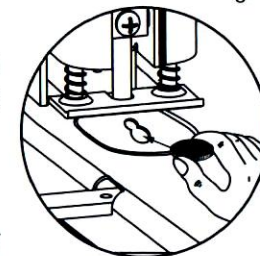


Fig. - 4

7. - Please do not put your finger(s) near working area, to avoid injury(fig. - 5).

8. - Depress the handle at middle of end position, not from any other side(fig. - 6).

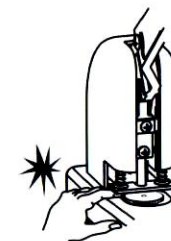


Fig. - 5

- Punching hole size -  $\varnothing 6$ .

9. - Spare punches available from your stationery supplier at nominal price.

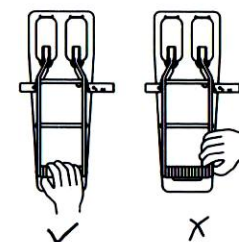
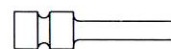


Fig. - 6



Punch



Plastic disc

Order code:

Punches

KP-2016-07 for 2016

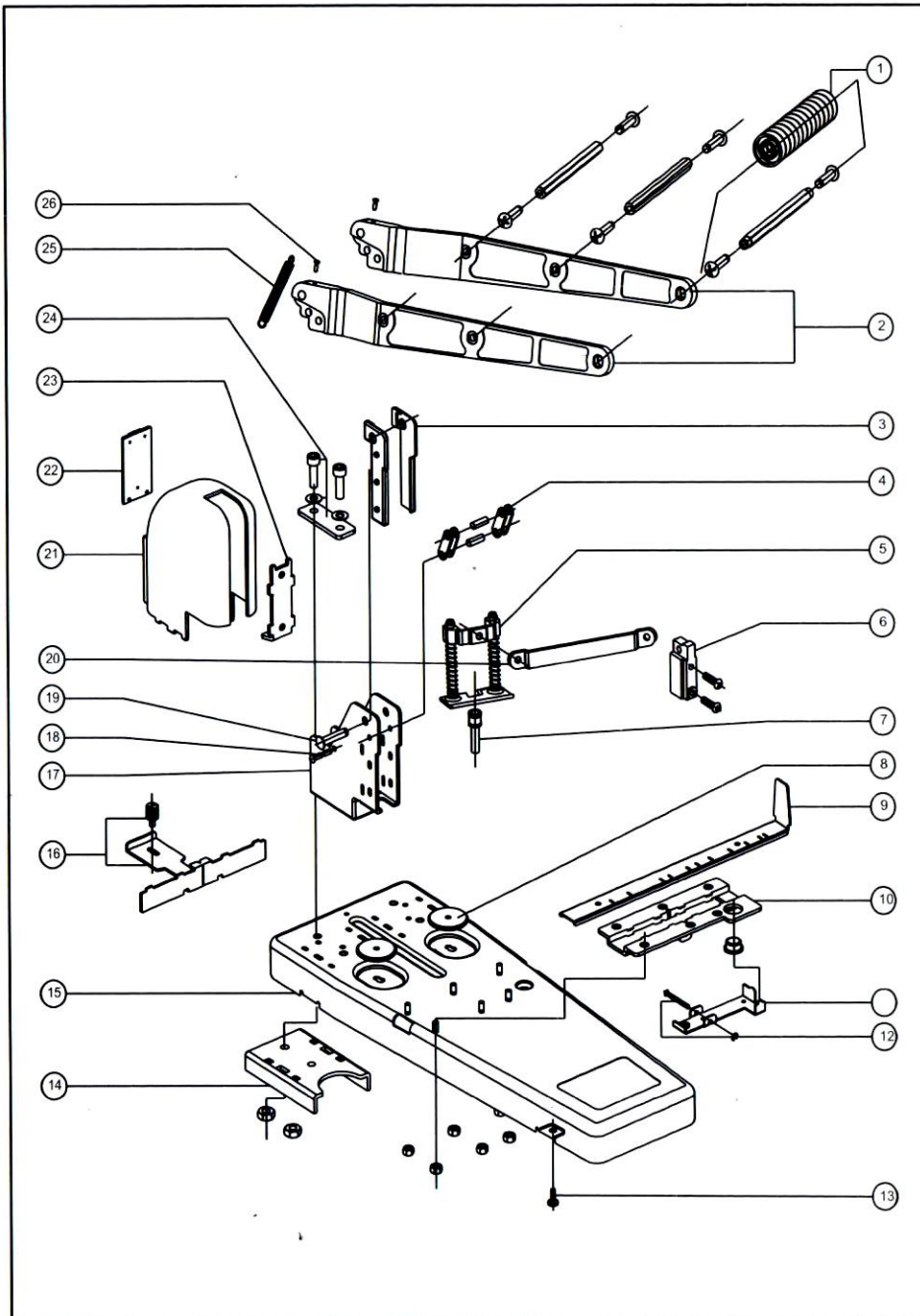
KP-2032-07 for 2032

Plastic disc

KP-2016-08 for 2016 & 2032

**KINDLY USE ON STANDARD PAPER ONLY (UP TO 80 GSM.)**

• SPARE PARTS DETAIL FOR PUNCHING MACHINE 2016 / 2032



• SPARE PARTS LIST FOR PUNCHING MACHINE 2016 / 2032

S.NO.	DESCRIPTION OF PARTS	NO. OFF	ORDER CODE
01	HANDLE SPACER ASSEMBLY	01	KP-2016-01
02	HANDLE ASSEMBLY	01	KP-2016-02
03	PLASTIC GUIDE ASSEMBLY	02	KP-2016-03
			KP-2032-03
04	LINK ASSEMBLY	02	KP-2016-04
			KP-2032-04
05	STRIPPER ASSEMBLY	02	KP-2016-05
			KP-2032-05
06	PUNCH HOLDER ASSEMBLY	02	KP-2016-06
07	PUNCH	02	KP-2016-07
			KP-2032-07
08	PLASTIC DISC	02	KP-2016-08
09	PAPER STOPPER	01	KP-2016-09
10	STOPPER HOUSING	01	KP-2016-10
11	STOPPER LOCK	01	KP-2016-11
12	PIN (STOPPER HOUSING)	01	KP-2016-12
13	BUTTON	04	KP-2016-13
14	STIFFENING	02	KP-2016-14
15	STEEL BASE	01	KP-2016-15
16	GAUGE	01	KP-2016-16
			KP-2032-16
17	STEEL BRACKET	02	KP-2016-17
			KP-2032-17
18	PIN (HANDLE SPRING)	02	KP-2016-18
19	HINGE PIN (MAIN)	02	KP-2016-19
20	FRONT LINK	01	KP-2016-20
21	PLASTIC COVER	02	KP-2016-21
			KP-2032-21
22	SCRAP COVER	02	KP-2016-22
23	BACK SUPPORT	02	KP-2016-23
			KP-2032-23
24	STIFFENING ASSEMBLY	02	KP-2016-24
25	TENSION SPRING (HANDLE)	02	KP-2016-25
26	SCREW	02	KP-2016-26
★ ALL SPARES AVAILABLE ON REQUEST AT REASONABLE PRICE			